



# Technical Data

## Surface Boxes And Blank Plates

### Brief product description:

The subtle design will blend with any décor - suitable for domestic or commercial installations.

### Features:

- Stylish modern profile
- Easy installation
- Covers to conceal fixing screws
- Surface boxes have multiple knock-outs and earth terminal fitted as standard
- Spacers provide greater clearance for installation wiring where shallow mounting boxes are used, an alternative to fitting a deeper box

### Product Images



817



818



836



837



838



891/893



892



894



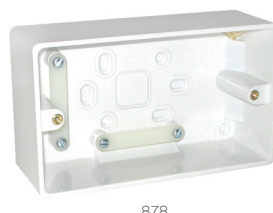
895



896



877



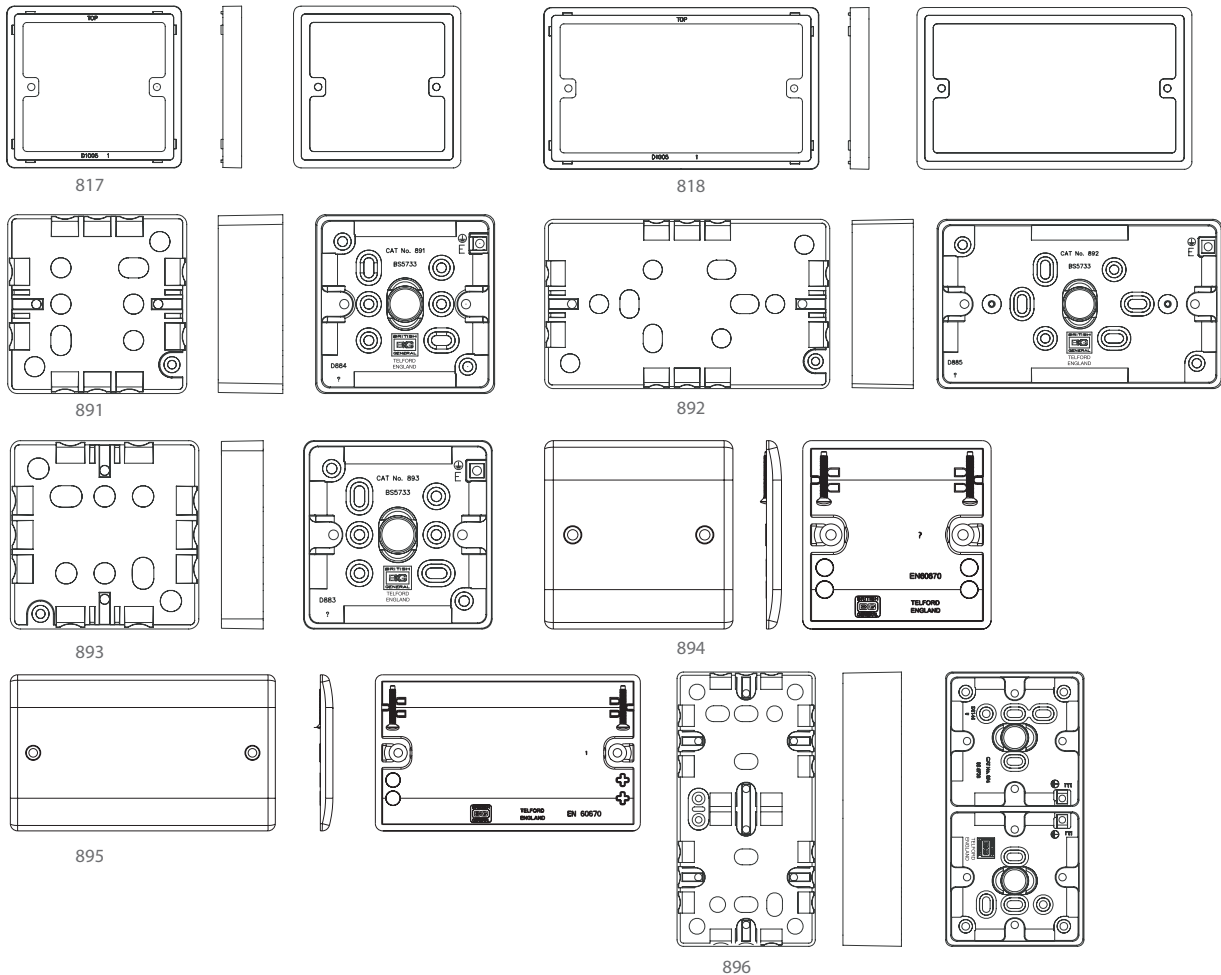
878

# Surface Boxes And Blank Plates

## Technical Specifications

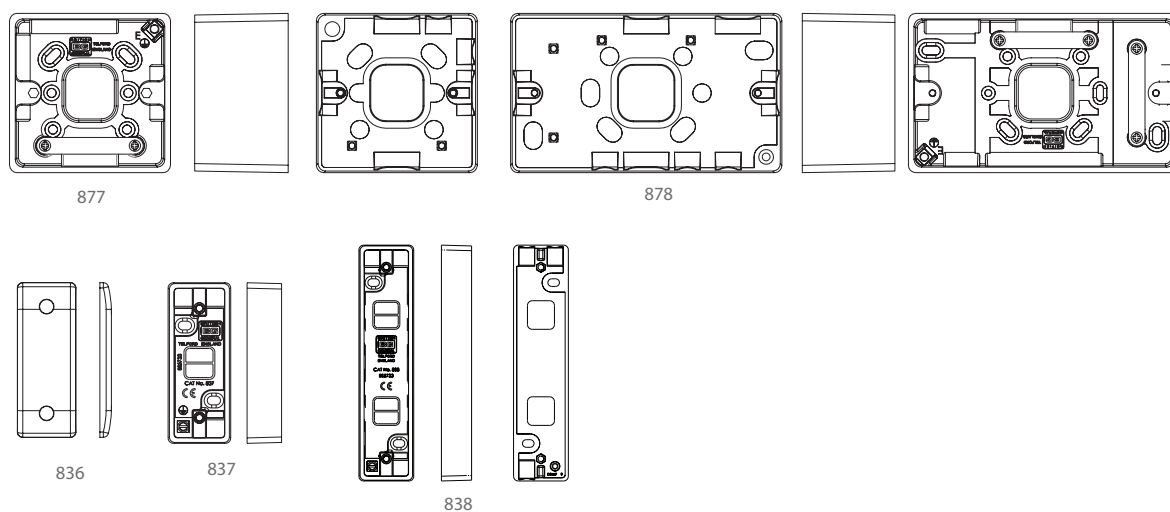
Standard(s)	BS5733	 
ASTA Approval	Blank Plates: License Number 1020	
Fixing Centres	60.3mm (817, 836, 894 products)	
	120.6mm (818, 895 products)	
Size	86mm x 86mm x 6.9mm (894 product)	
	86mm x 86mm x 10mm (817 product)	
	86mm x 86mm x 32mm (891 product)	
	86mm x 86mm x 19.5mm (893 product)	
	86mm x 86mm x 50mm (877 product)	
	87.5mm x 33mm x 19mm (837 product)	
	146.5mm x 86mm x 6.9mm (895 product)	
	146.5mm x 86mm x 10mm (818 product)	
	146.5mm x 86mm x 32mm (892 product)	
	172mm x 86mm x 37mm (896 product)	
	146.5mm x 86mm x 50mm (878 product)	
	87.5mm x 33mm x 19mm (837 product)	
	147.5mm x 33mm x 19mm (838 product)	

## Line Diagrams



# Surface Boxes And Blank Plates

## Line Diagrams



## Packaging Information

Cat No.	Description	Packaging Type			Pack Quantity			Barcode		
		Product	Inner Box	Outer Box	Each	Inner Box	Outer Box	Individual	Inner Box	Outer Box
817	1G, 10mm Sq	Nexus PolyBag	Nexus Inner	Nexus Outer	1	20	200	5050765002745	5050765002752	5050765002769
818	2G, 10mm Rect	Nexus PolyBag	Nexus Inner	Nexus Outer	1	10	100	5050765002776	5050765002783	5050765002790
891	1G, 32mm Box	Nexus PolyBag	Nexus Inner	Nexus Outer	1	10	100	5050765000017	5050765000024	5050765000031
892	2G, 32mm Box	Nexus PolyBag	Nexus Inner	Nexus Outer	1	5	50	5050765000048	5050765000055	5050765000062
893	1G, 19mm Box	Nexus PolyBag	Nexus Inner	Nexus Outer	1	10	100	5050765000079	5050765000086	5050765000093
894	1G Blank Plate	Nexus PolyBag	Nexus Inner	Nexus Outer	1	20	200	5050765000109	5050765000116	5050765000123
895	2G Blank Plate	Nexus PolyBag	Nexus Inner	Nexus Outer	1	10	100	5050765000130	5050765000147	5050765000154
896	37mm, Dual Box	Nexus PolyBag	Nexus Inner	Nexus Outer	1	5	50	5050765000161	5050765000178	5050765000185
877	1G, 50mm Box	Nexus PolyBag	Nexus Inner	Nexus Outer	1	10	100	5050765000222	5050765000239	5050765000246
878	2G, 50mm Box	Nexus PolyBag	Nexus Inner	Nexus Outer	1	5	50	5050765000253	5050765000260	5050765000277
836	1G, Arch Blank	Nexus PolyBag	Nexus Inner	Nexus Outer	1	20	200	5050765018067		
837	1G, Arch Blank, 19mm	Nexus PolyBag	Nexus Inner	Nexus Outer	1	20	200	5050765018074		
838	2G, Arch Blank, 19mm	Nexus PolyBag	Nexus Inner	Nexus Outer	1	10	100	5050765018081		

## Weights & Dimensions

Cat No.	Description	Dimension (W x L x H) cm			Weight (g)			CBM (m <sup>3</sup> )
		Product	Inner Box	Outer Box	Each	Inner Box	Outer Box	Outer Box
817	1G, 10mm Sq	9.2 x 9.2 x 3.2	19 x 18 x 9.2	39 x 49.5 x 19	72	754	8000	0.03
818	2G, 10mm Rect	8.6 x 14.6 x 1.0	14.4 x 15.2 x 9.2	27 x 50 x 20	37	437	4660	
891	1G, 32mm Box	9.2 x 9.2 x 3.2	16.8 x 18 x 9.2	35 x 49.5 x 19	74.5	875	9400	0.032
892	2G, 32mm Box	9.2 x 15.2 x 3.2	15 x 18 x 9.2	31 x 49.5 x 19	70.5	644	7000	0.029
893	1G, 19mm Box	9.2 x 9.2 x 1.95	10.5 x 18 x 9.2	22 x 49.5 x 19	56	691	7340	0.02
894	1G Blank Plate	9.2 x 9.2 x 7.1	12.5 x 18 x 9.2	26 x 49.5 x 19	27	854	9000	0.024
895	2G Blank Plate	9.2 x 15.2 x 7.1	12.5 x 15 x 9.2	26 x 49.5 x 16	81	693	7400	0.02
896	37mm, Dual Box	9.2 x 17.8 x 3.7	19 x 18 x 9.2	39 x 49.5 x 19	179	1010	10800	0.03
877	1G, 50mm Box	9.2 x 9.2 x 5	18 x 26.5 x 9.2	37.5 x 49.5 x 27.5	98	1453	15500	0.05
878	2G, 50mm Box	9.2 x 15.2 x 5	15 x 26.5 x 9.2	31.5 x 49.5 x 27.5	187	1031	11000	0.042
836	1G, Arch Blank							
837	1G, Arch Blank, 19mm							
838	2G, Arch Blank, 19mm							

# Surface Boxes And Blank Plates

## Installation Information

### Safety Warning

Before use please read carefully and use in accordance with these safety wiring instructions.

Before commencing any electrical work ensure the supply **is switched off at the mains**. Either by switching off the consumer unit or by removing the appropriate fuse.

Wiring should be in accordance with the latest edition of the IEE regulations (BS 7671).

### Wire Identification – Twin & Earth Cable

**EARTH** = Green/Yellow Sleaving

**NEUTRAL** = Black (pre Apr 04) / Blue (after Apr 04)

**LIVE** = Red (pre Apr 04) / Brown (after Apr 04)



**Technical Helpline: 03300 249 279**  
If in doubt consult a competent electrician.

The ends of the individual conductors should have the insulation removed by approx. 12mm. Any bare earth conductors should be sleeved to within 12mm of the ends. (These details are for general information only and conductor lengths may need to be trimmed in certain installations).



# Technical Data

## Surface Boxes And Blank Plates

### Brief product description:

A standard range of white moulded wall accessories offering superb quality and exceptional value.

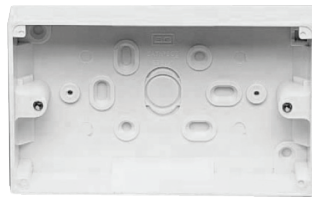
### Features:

- A standard design - suitable for domestic or commercial installations.
- Fitted with earth terminal as standard
- Multiple knockouts and fixing holes
- Cord grip adjacent to bottom knockout, alternative position for when the box is mounted vertically.

### Product Images



901



902



903



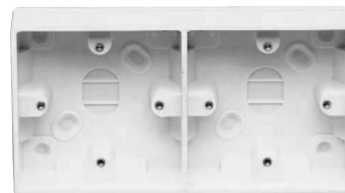
904



905



906



909



977



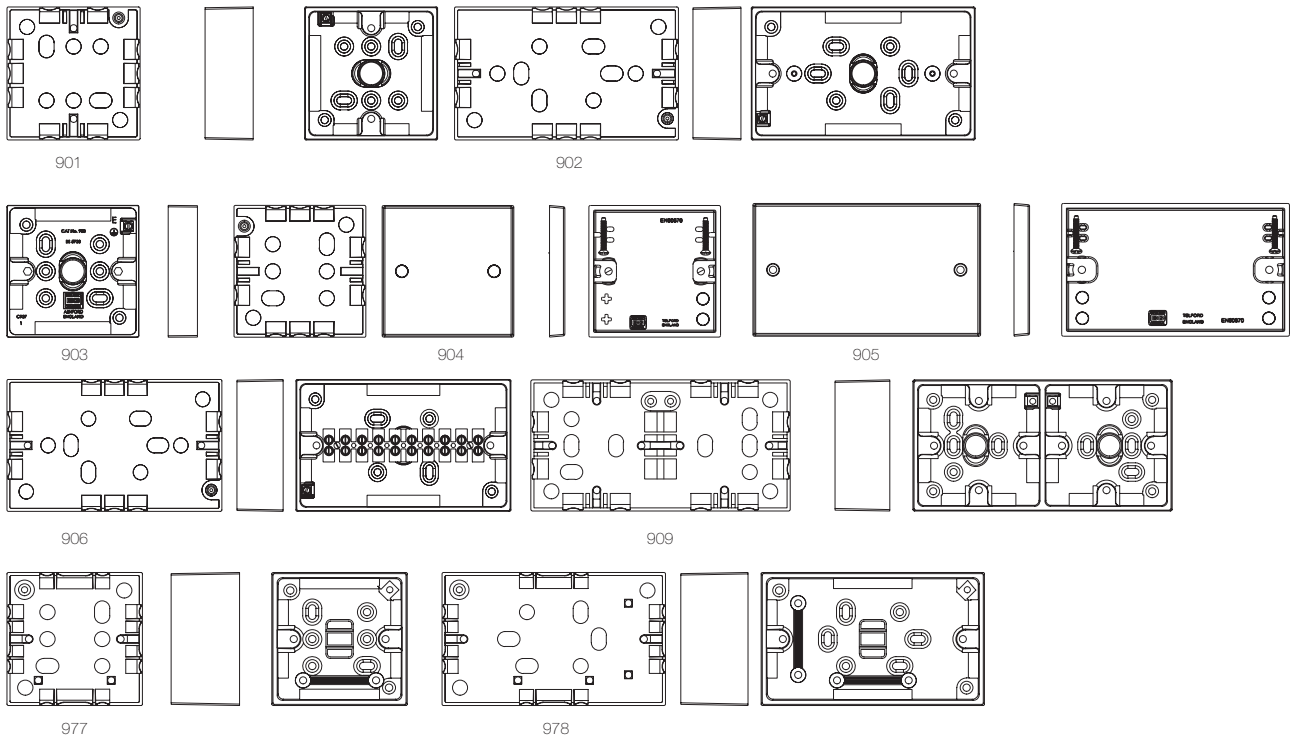
978

# Surface Boxes And Blank Plates

## Technical Specifications

Standard(s)	BS5733	 
ASTA Approval	Blank Plates: License Number 1020	
Covered by RoHS directive	No	
Covered by WEEE directive	No	
Fixing Centres	60.3mm (901, 903, 904, 977 products)	
	120.6mm (902, 905, 910, 978 products)	
	2 pairs of 60.3mm (909 products)	
Terminal block clamping	up to 6.0mm <sup>2</sup> (906 products)	
Size	87.5mm x 87.5mm x 32mm (901 products)	
	148mm x 87.5mm x 32mm (902 products)	
	87.5mm x 87.5mm x 19.5mm (903 products)	
	86mm x 86mm x 9mm (904 products)	
	146.5mm x 86mm x 9mm (905 products)	
	148mm x 87.5mm x 41mm (906 products)	
	174mm x 87.5mm x 37mm (909 products)	
	148mm x 87.5mm x 27.5mm (910 products)	
	87.5mm x 87.5mm x 45mm (977 products)	
	148mm x 87.5mm x 45mm (978 products)	

## Line Diagrams



# Surface Boxes And Blank Plates

## Packaging Information

Cat No.	Description	Packaging Type			Pack Quantity			Barcode		
		Product	Inner Box	Outer Box	Each	Inner Box	Outer Box	Individual	Inner Box	Outer Box
901	1G, 32mm Sq	Plain Bag	Plain Inner	Plain Outer	1	10	100	5021166901012	5021166901098	5021166901081
902	2G, 10mm Rect	Plain Bag	Plain Inner	Plain Outer	1	5	50	5021166902019	5021166902095	5021166902088
903	1G, 19mm Sq	Plain Bag	Plain Inner	Plain Outer	1	10	100	5021166903016	5021166903092	5021166903085
904	1G Blank Plate	Plain Bag	Plain Inner	Plain Outer	1	20	200	5021166904006	5021166904099	5021166904082
905	2G Blank Plate	Plain Bag	Plain Inner	Plain Outer	1	10	100	5021166905003	5021166905096	5021166905089
906	10W Connection Unit	Plain Bag	Plain Inner	Plain Outer	1	5	50	5021166906000	5021166906055	5021166906505
910	1g To 2g Conversion	Plain Bag	Plain Inner	Plain Outer	1	5	50	5021166910007	5021166910090	5021166910083
909	37mm, Dual Box	Plain Bag	Plain Inner	Plain Outer	1	5	50	5021166909001	5021166909094	5021166909087
977	1G 45mm	Plain Bag	Plain Inner	Plain Outer	1	10	100	5021166977000	5021166977093	5021166977086
978	2G 45mm	Plain Bag	Plain Inner	Plain Outer	1	5	50	5021166978007	5021166978090	5021166978083

## Weights & Dimensions

Cat No.	Description	Dimension (W x L x H) cm			Weight (g)			CBM (m <sup>3</sup> )
		Product	Inner Box	Outer Box	Each	Inner Box	Outer Box	Outer Box
901	1G, 32mm Sq	8.75 x 8.75 x 3.2	16.7 x 18.4 x 9.6	35.5 x 50 x 21.5	76	90	634	0.02
902	2G, 10mm Rect	8.75 x 14.8 x 3.2	15.3 x 16.8 x 9.2	32 x 48.5 x 18.5	108	82	704	0.02
903	1G, 19mm Sq	8.75 x 8.75 x 1.95	10.2 x 18 x 9.2	22 x 48.5 x 20	54	62	540	0.02
904	1G Blank Plate	8.6 x 8.6 x 1.0	11.2 x 18 x 9.3	23.2 x 48.6 x 18.6	51	950	10400	0.02
905	2G Blank Plate	8.6 x 14.6 x 1.0	10.9 x 15.3 x 9.3	22.6 x 48.6 x 15.9	88	700	8000	0.02
906	10W Connection Unit	9.2 x 15.3 x 21.2	18 x 19 x 10	24.9 x 32.2 x 49.5	130	700	13900	0.02
910	1g To 2g Conversion	14.6 x 8.6 x 3.1	18 x 19 x 10	24.9 x 32.2 x 49.5	130	700	13900	0.02
909	37mm, Dual Box	18 x 19.5 x 9.5	18 x 19.5 x 9.5	36.5 x 49.2 x 20.5	196	106	876	0.02
977	1G 45mm	18.5 x 23.2 x 9.5	18.5 x 23.2 x 9.5	38 x 50 x 24	116	120	966	0.02
978	2G 45mm	15.7 x 23.2 x 9.5	15.7 x 23.3 x 9.5	31 x 50 x 24.5	172	108	818	0.02

## Installation Information

### Safety Warning

Before use please read carefully and use in accordance with these safety wiring instructions.

Before commencing any electrical work ensure the supply **is switched off at the mains**. Either by switching off the consumer unit or by removing the appropriate fuse.

Wiring should be in accordance with the latest edition of the IEE regulations (BS 7671).

### Wire Identification – Twin & Earth Cable

**EARTH** = Green/Yellow Sleaving

**NEUTRAL** = Black (pre Apr 04) / Blue (after Apr 04)

**LIVE** = Red (pre Apr 04) / Brown (after Apr 04)



**Technical Helpline: 03300 249 279**

**If in doubt consult a competent electrician.**

The ends of the individual conductors should have the insulation removed by approx. 12mm. Any bare earth conductors should be sleeved to within 12mm of the ends. (These details are for general information only and conductor lengths may need to be trimmed in certain installations).