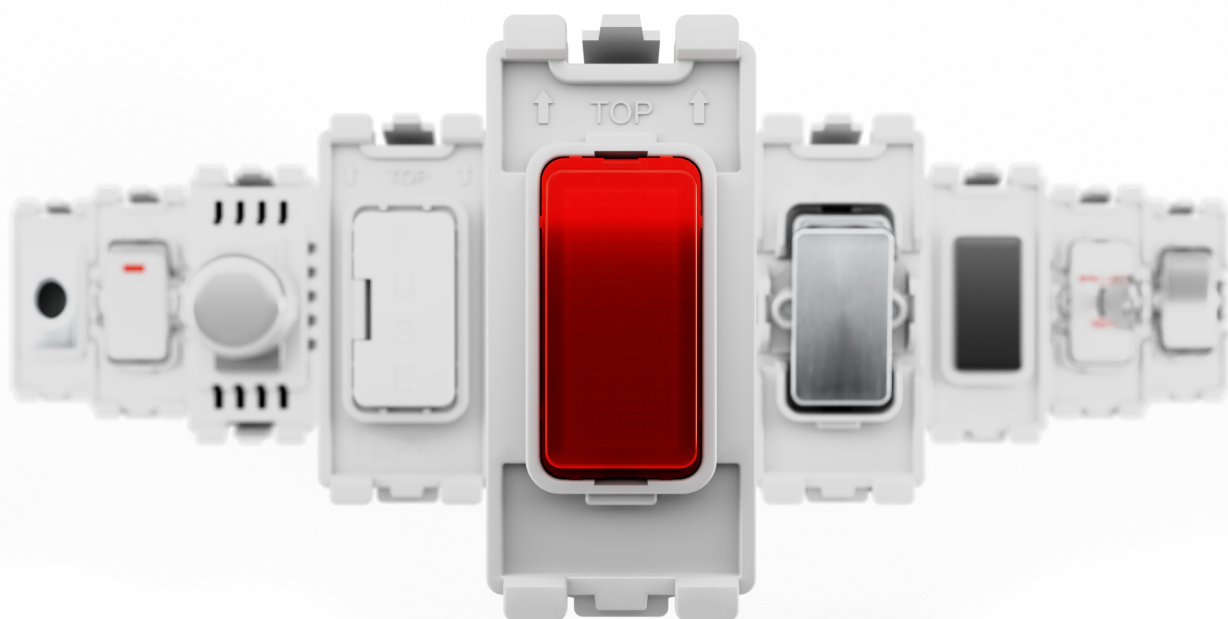




Nexus

# GRID

MODULAR SYSTEM



[www.bg-nexusgrid.uk](http://www.bg-nexusgrid.uk)



# Nexus Grid Modular System

Ideal for domestic, commercial and industrial applications, and allows you to build your own module configurations with a variety of combinations and finishes.

The range benefits aesthetically from having no visible plastic around the switches. Grid is also designed to be easy to install with a cantilever module to frame installation and interchangeable rockers to provide flexibility.

Nexus Grid is available in six stocked finishes:



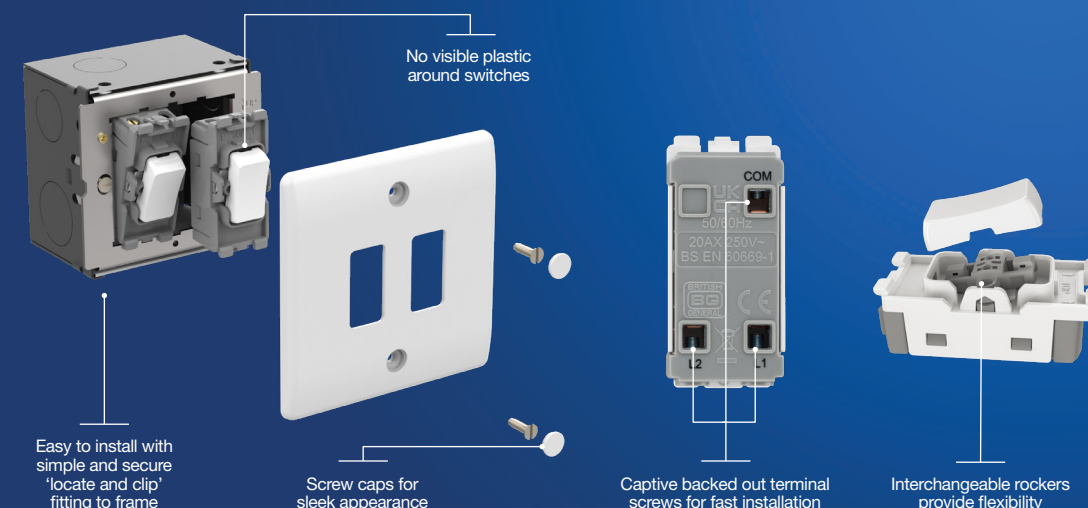
## IN THE RANGE

20 Amp Modules	5
Fan Isolator Modules	6
Dimmer Modules	6
Indicator Modules	6
Fused Modules	6
Flex Outlet Modules	7
Blank Modules	7
Front Plates	7
Grid Frames	8
Boxes	9
Rockers	9



BG Electrical products are guaranteed against faulty materials and workmanship for a period of 25 years from date of delivery.

## Features & Benefits



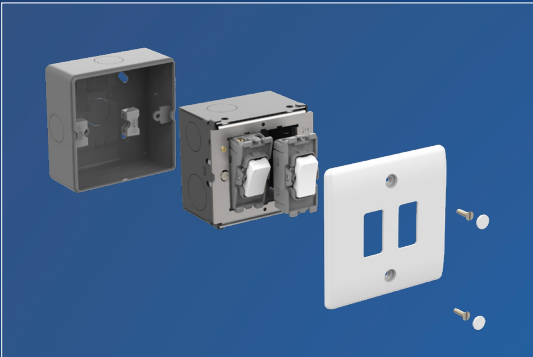
\*Anti-microbial properties for white moulded

# Quick & Easy to install

## Step 1

Fit and secure appropriate mounting box and frame:

- Cable should be protected by using grommets or conduit in the rear box cable entries.
- Pull cabling through frame and strip insulation accordingly.
- Ensure an earth connection between frame and box.
- Systematically terminate cables into each module.
- For Metal Clad installations the grid frames should have the spacers, supplied with the front-plate, positioned over the rear box lugs to locate the frame at the correct height.



## Screwless Flatplate Assembly:

When fitting one or three modules to the Screwless Flatplate grid frame, the blanking strips supplied must be fitted either side of the modules to prevent access to the wiring area.

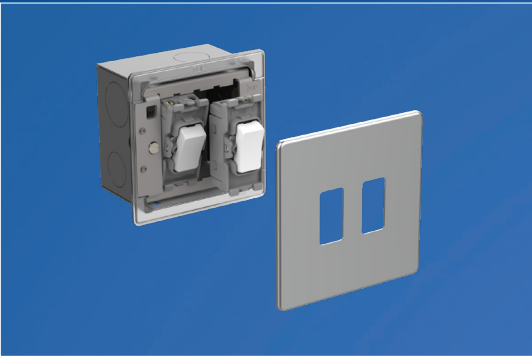
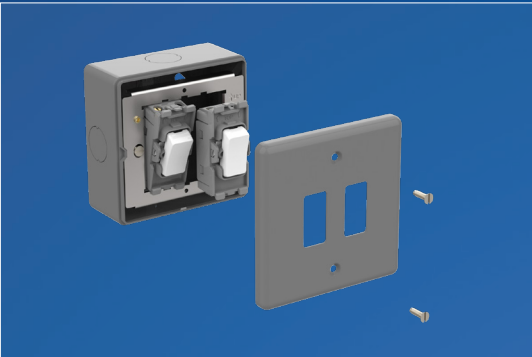
It is recommended to decorate the wall before fixing the frontplate.

Position the frontplate with the removable notch located over the angled face of the gasket in the lower right-hand corner and with the clips located in the apertures, push to secure.

## Step 2

Fit modules to frame:

- Locate the smaller central tab of the module into the notch of the frame with the larger central tab behind the frame and pivot upwards and clip into place.
- Frames should be fitted to the wall box using the fixing screws provided. Check the vertical position, and tighten frame screws securely. (Do not over tighten).
- Attach the front-plate using the fixing screws provided or attach screwless plates to the fixing points provided. For Screwless installations please see the additional assembly notes.



## Antimicrobial Properties

White moulded Grid plates & modules

BG Nexus white moulded wiring accessories promote a healthy environment by facilitating up to 99% reduction in bacterial development on touch point surfaces. Manufactured using high grade thermoset Urea which effectively inhibits the growth of infectious diseases, including MRSA, E-Coli, Salmonella and Klebsiella Pneumonia bacteria.



## 20 Amp 20AX Modules

- Simple secure 'locate & clip' fitting to frame
- Alternative printed rocker covers available
- Clearly marked terminals with backed out captive screws for easy installation
- Terminal capacity 4 x 1.0mm<sup>2</sup>, 4 x 1.5mm<sup>2</sup>, 2 x 2.5mm<sup>2</sup> & 1 x 4.0mm<sup>2</sup>
- Manufactured to BS EN 6009-2-1
- Minimum mounting box depth 25mm
- 20 Amp, 20AX inductive rated

White	Polished Chrome	Brushed Steel	Black Nickel	Description	Inner Carton	Outer Carton
R12	RPC12	RBS12	RBN12	2 way, single pole	10	100
R13	RPC13	RBS13	RBN13	Intermediate	10	100
R14	RPC14	RBS14	RBN14	2 way retractive, SP (PRESS)	10	100



## 20 Amp 20AX Modules – 3 Position

- Simple secure 'locate & clip' fitting to frame
- Clearly marked terminals with backed out captive screws for easy installation
- Terminal capacity 4 x 1.0mm<sup>2</sup>, 4 x 1.5mm<sup>2</sup>, 2 x 2.5mm<sup>2</sup> & 1 x 4.0mm<sup>2</sup>
- Manufactured to BS EN 6009-2-1
- Minimum mounting box depth 25mm
- 20 Amp, 20AX inductive rated

White	Polished Chrome	Brushed Steel	Black Nickel	Description	Inner Carton	Outer Carton
R12C	RPC12C	RBS12C	RBN12C	2 way, single pole, centre off	10	100
R14C	-	-	-	2 way retractive, SP (PRESS), centre off	10	100



## 20 Amp Double Pole Modules

- Double pole switching
- Simple secure 'locate & clip' fitting to frame
- Alternative printed rocker covers available
- Clearly marked terminals with backed out captive screws for easy installation
- Terminal capacity 4 x 1.0mm<sup>2</sup>, 4 x 1.5mm<sup>2</sup>, 2 x 2.5mm<sup>2</sup> & 1 x 4.0mm<sup>2</sup>
- Manufactured to BS EN 60669-2-1
- Minimum mounting box depth 25mm
- 20 Amp, 20AX inductive rate

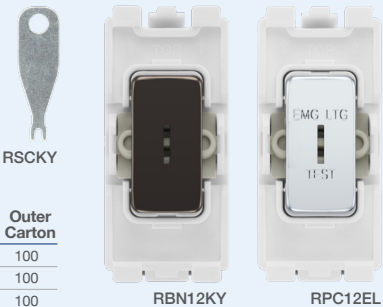
White	Polished Chrome	Brushed Steel	Black Nickel	Description	Inner Carton	Outer Carton
R30	RPC30	RBS30	RBN30	20A double pole	10	100
R31	-	-	-	20A double pole with LED indicator	10	100



## 20 Amp 20AX Secret Key Modules

- Supplied with key, spare keys available
- Clearly marked terminals with backed out captive screws for easy installation
- Terminal capacity 4 x 1.0mm<sup>2</sup>, 4 x 1.5mm<sup>2</sup>, 2 x 2.5mm<sup>2</sup> & 1 x 4.0mm<sup>2</sup>
- Manufactured to BS EN 60669-2-1
- Minimum mounting box depth 25mm
- 20 Amp, 20AX inductive rated

White	Polished Chrome	Brushed Steel	Black Nickel	Description	Inner Carton	Outer Carton
R12KY	RPC12KY	RBS12KY	RBN12KY	2 way, single pole	10	100
R30KY	RPC30KY	RBS30KY	RBN30KY	20A double pole	10	100
R12EL	RPC12EL	RBS12EL	RBN12EL	2 way, single pole – printed "EMG LTG TEST"	10	100
RSCKY	-	-	-	Spare secret key (pack of 10)	10	100





10 Amp 3 Pole Fan Isolator Modules

- Simple secure 'locate & clip' fitting to frame
- Triple pole switching design (can also be used for double pole applications)
- Clearly marked terminals with backed out captive screws for easy installation
- Terminal capacity 4 x 1.0mm², 4 x 1.5mm², 2 x 2.5mm² & 1 x 4.0mm²
- Manufactured to BS EN 60669-2-1
- Minimum mounting box depth 25mm
- 10 Amp rated

White	Polished Chrome	Brushed Steel	Black Nickel	Description	Inner Carton	Outer Carton
R15	RPC15	RBS15	RBN15	3 pole fan isolator	10	100



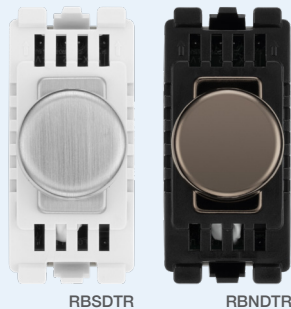
Dimmer Modules

- Intelligent trailing edge dimmer module
- Soft start, smooth dimming control and silent operation
- 2 Way push on/off with rotary control
- Overload protection
- Suitable for LED, Halogen, CFL and Incandescent lamps
- Clearly marked terminals with backed out captive screws for easy installation
- Terminal capacity 4 x 1.0mm², 4 x 1.5mm², 2 x 2.5mm² & 1 x 4.0mm²
- Manufactured to BS EN 60669-2-1
- Minimum mounting box depth 25mm
- 200-250V AC

Load Rating (Max/Min per module)

Dimmable LED	5-100W	Halogen	20-200W
Tungsten/Incandescent	5-200W	Dimmable Compact Fluorescent	5-100W

White	Polished Chrome	Brushed Steel	Black Nickel	Description	Inner Carton	Outer Carton
RDTR	RPCDTR	RBSDTR	RBNDTR	2-way 200W trailing edge	10	100



Indicator Modules

- LED light source, reliable and low power consumption
- Simple secure 'locate and clip' fitting to frame
- Clearly marked terminals with backed out captive screws for easy installation
- Terminal capacity 3 x 2.5mm², 2 x 4.0mm² & 1 x 6.0mm²
- Manufactured to BS 5733
- Minimum mounting box depth 25mm
- 250V

Product Code	Description	Inner Carton	Outer Carton
RINGR	Green	10	100
RINOR	Orange	10	100
RINRD	Red	10	100



Fused Modules

- Simple secure 'locate and clip' fitting to frame
- Terminal capacity 3 x 2.5mm², 2 x 4.0mm² & 1 x 6.0mm²
- Minimum mounting box depth 25mm
- Clearly marked terminals with backed out captive screws for easy installation
- Supplied with 13A fuse fitted to BS 1362

White	Polished Chrome	Brushed Steel	Black Nickel	Description	Inner Carton	Outer Carton
RFUSE	RPCFUSE	RBSFUSE	RBNFUSE	Fuse holder	10	100



Flex Outlet Modules

- Cable entry with cord grip
- Suitable for cables with an outside diameter up to 10mm
- Manufactured to BS 5733
- Minimum mounting box depth 25mm

White	Polished Chrome	Brushed Steel	Black Nickel	Description	Inner Carton	Outer Carton
RFLEX	RPCFLEX	RBSFLEX	RBNFLEX	Flex outlet (up to 10mm)	10	100



Blank Modules

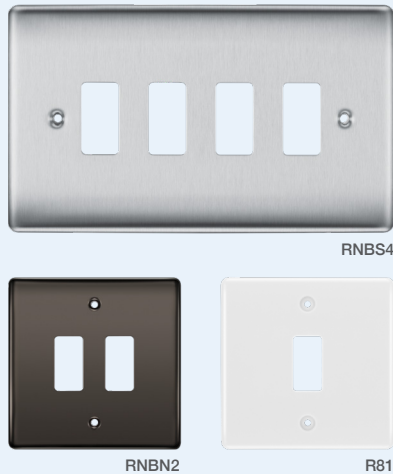
- Ideal for inserting in to unused Grid apertures
- Simple secure 'locate & clip' fitting to frame

White	Polished Chrome	Brushed Steel	Black Nickel	Description	Inner Carton	Outer Carton
RBLNK	RPCBLNK	RBSBLNK	RBNBLNK	Blank module	10	100



Front Plates – Nexus Moulded & Nexus Metal

- Front-plates match the power products for the White Moulded & Nexus Metal ranges
- No visible plastic around rockers
- White plates supplied with covers to conceal fixing screws
- Metal plates fitted with moisture control gasket
- Brushed steel with anti-fingerprint lacquer
- Easy to install, supplied with fixing screws



White	Polished Chrome	Brushed Steel	Black Nickel	Description	Inner Carton	Outer Carton
R81	RNPC1	RNBS1	RBNB1	1 gang	20	200
R82	RNPC2	RNBS2	RBNB2	2 gang	20	200
R83	RNPC3	RNBS3	RBNB3	3 gang	10	100
R84	RNPC4	RNBS4	RBNB4	4 gang	10	100
R86	RNPC6	RNBS6	RBNB6	6 gang	10	100
R88	RNPC8	RNBS8	RBNB8	8 gang	10	100
R89	-	RNBS9	-	9 gang	10	100
R812	-	RNBS12	-	12 gang	10	100



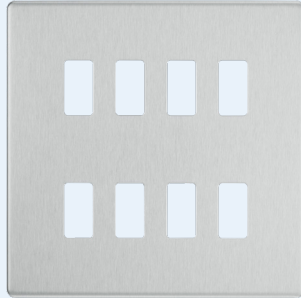
Front Plates – Screwless Flatplate

- Front-plates match the standard Screwless Flatplate range
- Flat profile with rounded edges
- Clip on/off frontplates allow for removal during redecoration projects
- No visible plastic around rockers
- Brushed steel with anti-fingerprint lacquer
- 1, 3, 6g front-plate supplied with grid blanks (Screwless only)

Polished Chrome	Brushed Steel	Black Nickel	Description	Inner Carton	Outer Carton
RFPC1	RFBS1	RFBN1	1 gang	20	200
RFPC2	RFBS2	RFBN2	2 gang	20	200
RFPC3	RFBS3	RFBN3	3 gang	10	100
RFPC4	RFBS4	RFBN4	4 gang	10	100
RFPC6	RFBS6	RFBN6	6 gang	10	100
RFPC8	RFBS8	RFBN8	8 gang	10	100



RFPC2



RFBS8

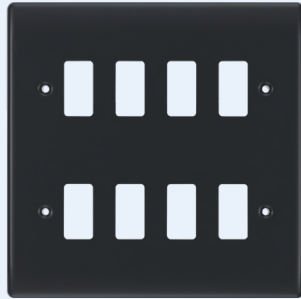
Front Plates – Part M

- Front plates match the power products of the Part M range
- No visible plastic around rockers
- Grid solutions allow a wider range of solutions to enable compliance of requirements for Part M1
- Easy to install, supplied with fixing screws

Product Code	Description	Inner Carton	Outer Carton
RPM1	1 gang	20	200
RPM2	2 gang	20	200
RPM3	3 gang	10	100
RPM4	4 gang	10	100
RPM6	6 gang	10	100
RPM8	8 gang	10	100



RPM3



RPM8

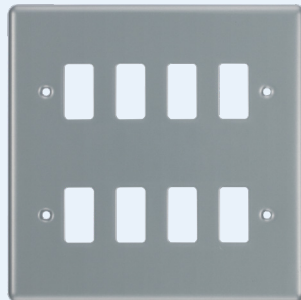
Front Plates – Metal Clad

- Front plates match the power products of the Metal Clad range
- A rugged, scratch resistant range, suitable for everyday use in commercial and industrial environments
- No visible plastic around rockers
- Suitable for flush wall mounting, or surface mount with metal clad boxes
- Easy to install, supplied with fixing screws

Product Code	Description	Inner Carton	Outer Carton
RMC1	1 gang	20	200
RMC2	2 gang	20	200
RMC3	3 gang	10	100
RMC4	4 gang	10	100
RMC6	6 gang	10	100
RMC8	8 gang	10	100



RMC1



RMC8

Grid Frames

- RFR12/34**
- Universal frame for Metal Clad, White Moulded, Nexus Metal & Part M front plates

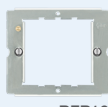
- RFR12/34/68FP**
- These frames are only for the Screwless Flatplate versions
  - Fixed integrated plastic gasket to protect metal edges from moisture

- Common Features**
- Earth terminal(s) fitted as standard
  - Frames supplied with fixing screws for mounting

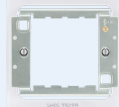
Screwed Plates	Screwless Flatplate Only	Description	Inner Carton	Outer Carton
RFR12	RFR12FP	1 + 2 gang frame	20	200
RFR34	RFR34FP	3 + 4 gang frame	10	100
(Use – 2 x RFR34)	RFR68FP	6 + 8 gang frame	5	50



RFR34



RFR12



RFR12FP

Boxes

- Rugged, scratch resistant metal boxes suitable for everyday use in commercial and industrial environments
- Manufactured in heavy gauge steel for extra safety
- Multiple knock-out mounting box
- Earth terminal fitted as standard

Product Code	Description	Inner Carton	Outer Carton
MC501	Square surface mount box (1g + 2g Grid)	10	100
MC502	Rectangular surface mount box (3g + 4g Grid)	5	50
MC503	Double metal box – surface mount (6g + 8g Grid)	5	25
HGS68	Double metal box – flush mount (6g + 8g Grid)	5	25
HGS912	Triple metal box – flush mount (9g + 12g Grid)	5	25



MC501



HGS68

Rockers

- Replacement rockers available in all finishes
- Plastic – printed, metal – embossed
- Supplied in bags of 10
- Easy to fit on standard Grid switch modules



RRFZPC

RRUPBN

RRBLBS

RRFFW

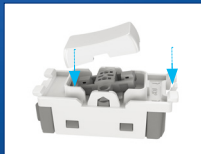
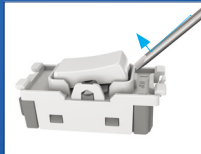
White	Polished Chrome	Brushed Steel	Black Nickel	Description	Inner Carton	Outer Carton
RRHBW	RRHBPC	RRHBBS	RRHBBN	HOB	10	100
RROWW	RROVPC	RROVBS	RROVBN	OVEN	10	100
RRFNW	RRFNPC	RRFNBS	RRFNBN	FAN	10	100
RRWMW	RRWMPC	RRWMBS	RRWMBN	WASHING MACHINE	10	100
RRTDW	RRTDPC	RRTDBS	RRTDBN	TUMBLE DRYER	10	100
RRFDW	RRFDPC	RRFDBS	RRFDBN	FRIDGE	10	100
RRFFW	RRFFPC	RRFFBS	RRFFBN	FRIDGE FREEZER	10	100
RRFZW	RRFZPC	RRFZBS	RRFZBN	FREEZER	10	100
RRBLW	RRBLPC	RRBLBS	RRBLBN	BOILER	10	100
RRMWV	RRMWPC	RRMWBS	RRMWBN	MICROWAVE	10	100
RRCHW	RRCHPC	RRCHBS	RRCHBN	COOKER HOOD	10	100
RRWHW	RRWHPC	RRWHBS	RRWHBN	WATER HEATER	10	100
RRWDISW	RRWDISPC	RRWDISBS	RRWDISBN	WASTE DISPOSAL	10	100
RRACW	RRACPC	RRACBS	RRACBN	AIR CON	10	100
RRDWW	RRDWPC	RRDWBS	RRDWBN	DISH WASHER	10	100
RRHTW	RRHTPC	RRHTBS	RRHTBN	HEATER	10	100
RRBELLW	RRBELLPC	RRBELLBS	RRBELLBN	Bell Symbol (Graphic)	10	100
RRUPW	RRUPPC	RRUPBS	RRUPBN	Unprinted Rocker	10	100
RRUPG	-	-	-	Unprinted Graphite Rocker (Part M)	10	100
RRUPRD	-	-	-	Unprinted Red Rocker	10	100
RRUPAB	-	-	-	Unprinted Antique Brass Rocker	10	100

Replacement & Interchangeable Rockers

Replacement rockers – Switch modules are supplied with plain rockers, however a selection of pre-printed rockers are available.

To replace:

- Remove existing rocker by inserting screwdriver under rocker cap and lifting.
- Position replacement cap into aperture and clip into place ensuring text is correctly aligned in relation to top of module.



**UK:****HEAD OFFICE:**

Email: [info@luceco.com](mailto:info@luceco.com)

Luceco plc, Caparo House  
103 Baker Street, London  
England, W1U 6LN

**DISTRIBUTION CENTRE:**

Tel: +44 (0) 1952 238 100  
Email: [uk\\_sales@luceco.com](mailto:uk_sales@luceco.com)

Luceco plc  
Luceco Distribution Centre  
Stafford Park 1, Telford  
Shropshire, England, TF3 3BD

**GERMANY:**

Tel: +49 40 89066 878 - 0  
Email: [eu\\_sales@luceco.com](mailto:eu_sales@luceco.com)

Nexus Industries GmbH  
Holstenplatz 20b  
22765 Hamburg, Germany

**FRANCE:**

Tel: +33 (0)1 61 10 10 35  
Email: [fr\\_sales@luceco.com](mailto:fr_sales@luceco.com)

Luceco SAS France & Belux  
3 Rue de Courtaulin  
Magny Le Hongre 77700  
Paris, France

**ITALY:**

Tel: +39 0434 1696795  
Email: [it\\_sales@luceco.com](mailto:it_sales@luceco.com)

Luceco Southern Europe,  
S.L. Via Amman 10  
33170 Pordenone, Italy

**SPAIN:**

Tel: +34 93 829 55 75  
Email: [es\\_sales@luceco.com](mailto:es_sales@luceco.com)

Nexus Industries LTD  
C/ Bobinadora 1-5  
08302 Mataró  
Barcelona (SPAIN)

**MIDDLE EAST:**

Tel: +971 4 609 1867  
Email: [mea\\_sales@luceco.com](mailto:mea_sales@luceco.com)

Luceco Middle East FZCO  
Bldg. 5EB, Office 342  
PO Box 371128, DAFZA  
Dubai, UAE

**ASIA PACIFIC:****JIAIXING:**

Tel: +86 (0) 573 8357 0200  
Email: [asia\\_sales@luceco.com](mailto:asia_sales@luceco.com)

No 1438, Jiachuang Road  
Xiuzhou Industrial Park, Jiaxing  
Zhejiang, China, P.C. 314031

**MEXICO & LATIN AMERICA:**

Tel: +52 (81) 5000 9437  
Email: [ventas@luceco.com](mailto:ventas@luceco.com)

Luceco México S. de R.L. de C.V.  
Batallón de San Patricio #109 Sur,  
Col. Valle Oriente, San Pedro Garza  
García N.L. México CP 66260 (Torre  
Avalanz, Piso #20, Oficina 2009)

**AFRICA:**

Tel: +27 11 432 6779  
Email: [africa\\_sales@luceco.com](mailto:africa_sales@luceco.com)

Unit 2, Cedarwood Office Park  
Cnr. Western Service and  
Mount Lebanon Road, Woodmead,  
South Africa, 2144

**TECHNICAL SUPPORT:**

Tel: 03300 249 279  
Email: [technical.support@bgelectrical.co.uk](mailto:technical.support@bgelectrical.co.uk)

Lines open Monday to Friday  
8.30am to 5pm, with answer phone  
service outside these hours.

